



CE

**KangurGO-E**

[www.scan-go.eu](http://www.scan-go.eu)

*Made in Italy*



**USE AND  
MAINTENANCE  
HANDBOOK**

January 2018

**SCAN&GO srl**  
Via della Tecnica 34 A/B - 41051  
Castelnuovo Rangone (MO) - Italy  
Telefono +39 059798545  
[info@scan-go.eu](mailto:info@scan-go.eu)

# KagurGO-E

## Lifting system with pneumatic telescopic column, compact and easy to use, equipped with cart and stabilizers wheels

KangurGO is a telescopic column made of anodized aluminum with pneumatic extensions by hand pump, complete with manual locks that allows to stop the column at the desired height, with maximum height of 3,50 meters (with LPE16).

The column is mounted on a cart with rubber wheels and painted frame, with light and compact design.

KangurGO is equipped with stabilizers wheels that ensures fast movements between the scan sessions without set down or dismount the laser scanner .

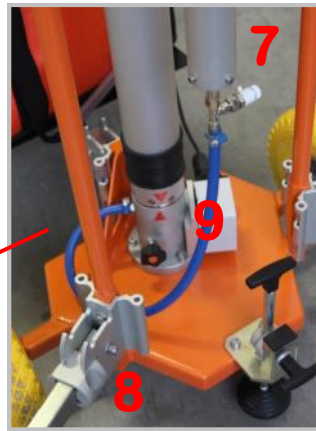


### **ATTENTION !!!!**

READ CAREFULLY THE PRESENT INSTRUCTION  
MANUAL BEFORE USING THE EQUIPMENT

IT IS STRICLY FORBIDDEN THE USE OF THIS  
EQUIPMENT TO PEOPLE AGED LESS THAN 18

## DETAILS AND ACCESSORIES



<b>1</b>	SUPPORT PLATE FOR LPE
<b>2</b>	HEAD AND MECHANICAL LOCK
<b>3</b>	COLUMN
<b>4</b>	CART
<b>5</b>	ADJUSTABLE LEGS WITH STABILIZERS WHEELS
<b>6</b>	PUMP
<b>7</b>	VALVE FOR CLOSING EXTENSIONS
<b>8</b>	OPENING AND CLOSING FEET FOR THE STABILIZERS
<b>9</b>	ELECTRIC BOX
<b>10</b>	SUPPORT AND SECURITY LEG

## ACCESSORIES

<b>A</b>	KCV	WINDBRACING KIT
<b>B</b>	BMA	SOFT BAG FOR ACCESSORIES
<b>C</b>	BT-NB	BATTERY KIT (BATTERY NOT INCLUDED)
<b>D</b>	SUC	SUPPORT FOR LPE CONTROLLER



# INSTRUCTIONS FOR INSTALLATION AND USE

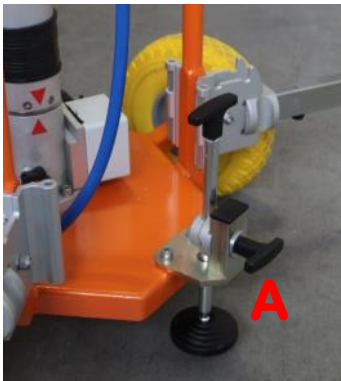
The KangurGO is shipped in a wooden box, designed to safeguard the integrity during the transport, Open the case by opening the hooks and removing the screws that secure the cover.



Remove the plastic clamp that locks the column to the wooden support, and remove the column.

## 1° STEP

Put the KangurGO in a vertical position with the SUPPORT AND SECURITY LEG (A) blocked and proceed as follows:



Loosen and rotate the adjustable feet bases 90° outwards



Extend outwards the skates and rotate the stabilizers until the skates click into place



## 2° STEP

Montaggio del livellatore sulla testa del palo e dei suoi accessori (batteria e controller) procedere come segue:



Place the automatic leveler LPE using the bushing adapter at the bottom



Tighten the 4 locking knobs



Connect the extremity of the cable **A** to the KEYBOARD CONNECTOR into the front LPE

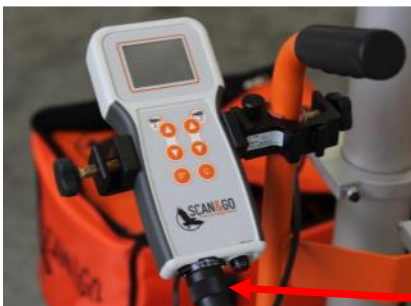


Fix the LPE controller to the KangurGO frame with his own support

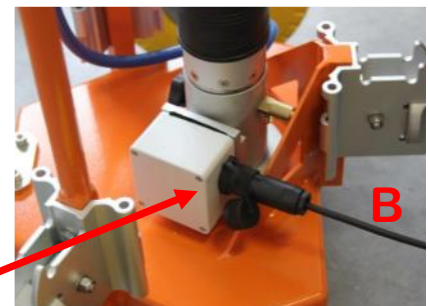


Place the battery case inside of the Leveller soft case and connect the cables as follow:

### Keyboard



### Power



- Connect the LPE controller to the KEYBOARD connector of the battery case
- Connect one side of the power cable **B** from the battery to the POWER connector, and the other side to the junction box
- Turn on the power by positioning the main switch to ON

## **3° STEP**

**TELESCOPIC MAST OPENING**, proceed as follows:



Check that the extensions down valve is closed



Fully open the mechanical lock of the first extension



Use the hand pump to fully eject the first extension



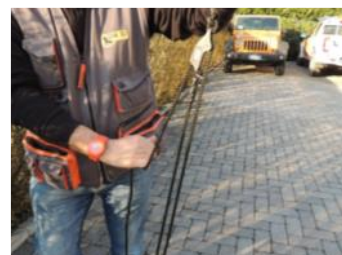
Close the mechanical locking of the first extension

Continue in the same way for all extensions to the complete opening of the mast

---

## **USE OF BRACING**

Connect the bracing to the top-head of the column and to the stabilizers feet like shown in the pictures



**Complete the procedure by pulling the wind bracing ropes being careful not to overdo with the tension force**



**WHEN THE POLE IS COMPLETELY OPEN,  
MOVEMENTS ARE ALLOWED ONLY WITH THE THREE STA-  
BILIZING LEGS OPEN**

## **4° STEP**

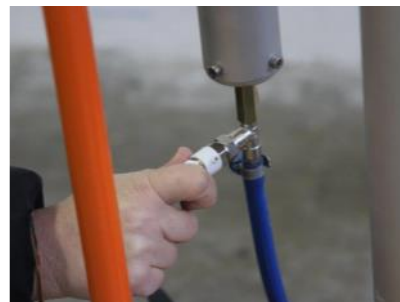
### **TELESCOPIC MAST CLOSURE**



Once the equipment has been used, proceed to the descent of each extension starting from the last that has been risen. Before this operation, restore pressure to the column to ensure a safe descent of the extensions and of the equipment placed on the top, as follows:



Completely open the mechanical lock of the first extension



Open the air safety valve for the descend of the first extension.  
As soon as it reaches the bottom, close the valve avoiding the exit of more air

After close the mechanical lock of the first extension and open the one of the second one

Continue in the same way for all the extensions till the complete closure of the pole





## REQUIREMENTS:

### LIMITS OF USE

The two most important limits to be always checked are THE MAXIMUM PERMITTABLE PAYLOAD as well as the WIND STRENGTH

\* MAXIMUM LOAD (see the technical data) refers to the mass that can be installed on the top of the mast to ensure a safe use. All loading conditions that exceed the limit will be considered as dangerous and will result in an immediate end of any form of warranty.

\* Similarly, it must be considered the STRENGTH OF THE WIND. If there is a strong wind, the manufacturer is not responsible of damages that may be caused by the inappropriate use of the equipment such as tipping etc.

### RISKS RELATED TO THE USE

The three main sources of risk are :

**RISK OF FALLING** of the equipment extended in height, resulting from the action of wind that has not been evaluated adequately

**COLUMN VERTICAL DESCENT** and consequently of the accessories installed on its top: this can only happen in exceptional circumstances and in case that, during the lifting for problems of : extreme temperatures, damage to one of the parts of the column, defect of pneumatic seal, one of the seals loses efficacy in a sudden coming out from its seat, causes a substantial absence of sealing with a rapid reduction of the internal pressure. In this case it is possible that the column returns to the ground causing itself a damage, all of this can be prevented if you use the mechanical locks for each extension. (See the mast opening phase)

**CONTACT WITH ELECTRICAL CABLES**, avoiding the risks is possible if the product is used properly by paying attention to the possible sources of danger present in the area. Please, remember that the electrical cables for high voltage, may define the electric discharge to the ground simply approaching and not necessarily touching the conductor.

It is therefore recommended to limit, as far as possible, the influence of the above risks, both for the operational staff and for strangers, in the following way:

- \* prohibit the transit and parking space surrounding the KangurGO-E
- \* maintain the efficiency of the equipment
- \* in the case of use of compressed air sources, limiting the value of supply pressure to a maximum of 2.5 bar

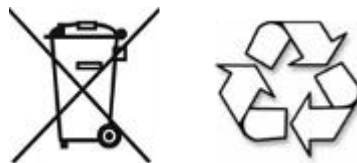
The use of the column installed differently from the original configuration and aimed to processing other things than those provided by the manufacturer.

**The use in the presence of functional anomalies and discrepancies in the terms of use and safety instructions described in this manual. If something happens, request and wait for assistance from the personnel.**

- The instructions, drawings and documentation contained in this document are of confidential technical nature, of property of the manufacturer and may not be reproduced in any manner, either wholly, or in part.
- The manufacturer reserves the right to make changes and improvements at any time, without any modification to this manual, and without prior notice.
- This document must be kept for future reference, until the scrapping of the machine and must be made available to the operators.
- If the unit is sold or leased, both the person who rents and the one who offer the service, is obliged to give the manual to the new owner or user.
- The original instructions are provided by the manufacturer in the Italian language.
- This document assumes that in the places where the equipment is sold, users respect the safety standards in force in the country.
- If the manual is lost or damaged, you can request a copy to the dealer, providing the data of the model, serial number and year of construction.
- Do not use the manual for any purpose other than the use and maintenance of the product.

### **CLEANING INSTRUCTIONS**

- Clean with mild soap and water, do not use chemical cleaners.
- Do not lubricate with grease or oil of any kind.



### **INSTRUCTIONS FOR DEMOLITION**

The demolition of the machine must be done by qualified personnel in such activities and provided with adequate expertise.

The disassembled components must be separated according to the nature of the materials they are made in compliance with the applicable laws of "different waste".

## WARRANTY

- The product warranty is of 12 months from the date of the delivery (Invoice Date).
- SCAN & GO S.r.l. will support, at its discretion, the repairment and / or replacement of parts with manufacturing defects or damages during the warranty period, after having evaluated the failure.
- The shipping cost of the damaged/defective parts during the warranty period, and the labour for its removal and replacement, are not included in the warranty, and may be approved only after prior written request and consequent authorization.
- The warranty does not cover cases of normal wear and tear, negligence in use, improper maintenance and improper use.
- The warranty is void if the machine is equipped with accessories or non-original parts.
- In no event SCAN & GO srl will cover the expenses, for loss or damage of any kind resulting from the use more or less correct or from the partial or total malfunctioning of the equipment.
- The goods travel at the risk of the recipient, any damage incurred during the shipment must be claimed at the delivery by the courier in charge.

The manufacturer is deemed non-responsible in the case of:

- 1) inappropriate use of the KANGUR-LIFT
- 2) use of the equipment, against to any other applicable national regulations;
- 3) serious lack of attention in the maintenance;
- 4) interventions or unauthorized modifications;
- 5) use of non-original parts or replacing parts;
- 6) failure to comply, in whole or in part, of the instructions;
- 7) exceptional events.

## TECHNICAL PROBLEMS RESOLUTION AND FAQ

**THE MAST  
DOES NOT  
EXTEND  
COMPLETELY**

**1) Hand pump malfunction**

Test the hand pump with the air valve open. If the pump does not provide adequate air pressure replace the internal seals.

**2) One of the release valves is open**

Check both valves (on the mast and on the pump, if supplied) are closed.

**3) Sections locked**

Check all locking devices.

**4) Unidirectional valve malfunction**

Check the correct functionality of valve.

**5) Internal seals malfunction**

Determine the leaking seal, and proceed with mast disassembly and replace the seal.

**THE MAST  
DOES NOT  
RETRACT  
COMPLETELY**

**1) A locking device is still locked**

Unlock completely the section which does not retract.

**2) Ice inside the mast**

Wait for a temperature rise and retract the mast.

**3) A seal is jammed**

Supply air pressured to release the seal.

**4) The mast is deformed**

If the mast is deformed (one or more sections are damaged) it cannot be retracted completely. Extra ordinary maintenance is necessary and this must be performed by the constructor.



NEW surveying technology & solutions